

USING LABOUR TIME SCHEDULE

Labour Time Guide Evora Issue 1-June2009 B132T0328D-09-01.pdf - Adobe Acrobat

File Edit View Document Comments Forms Tools Advanced Window Help

Create Combine Collaborate Secure Sign Forms Comment

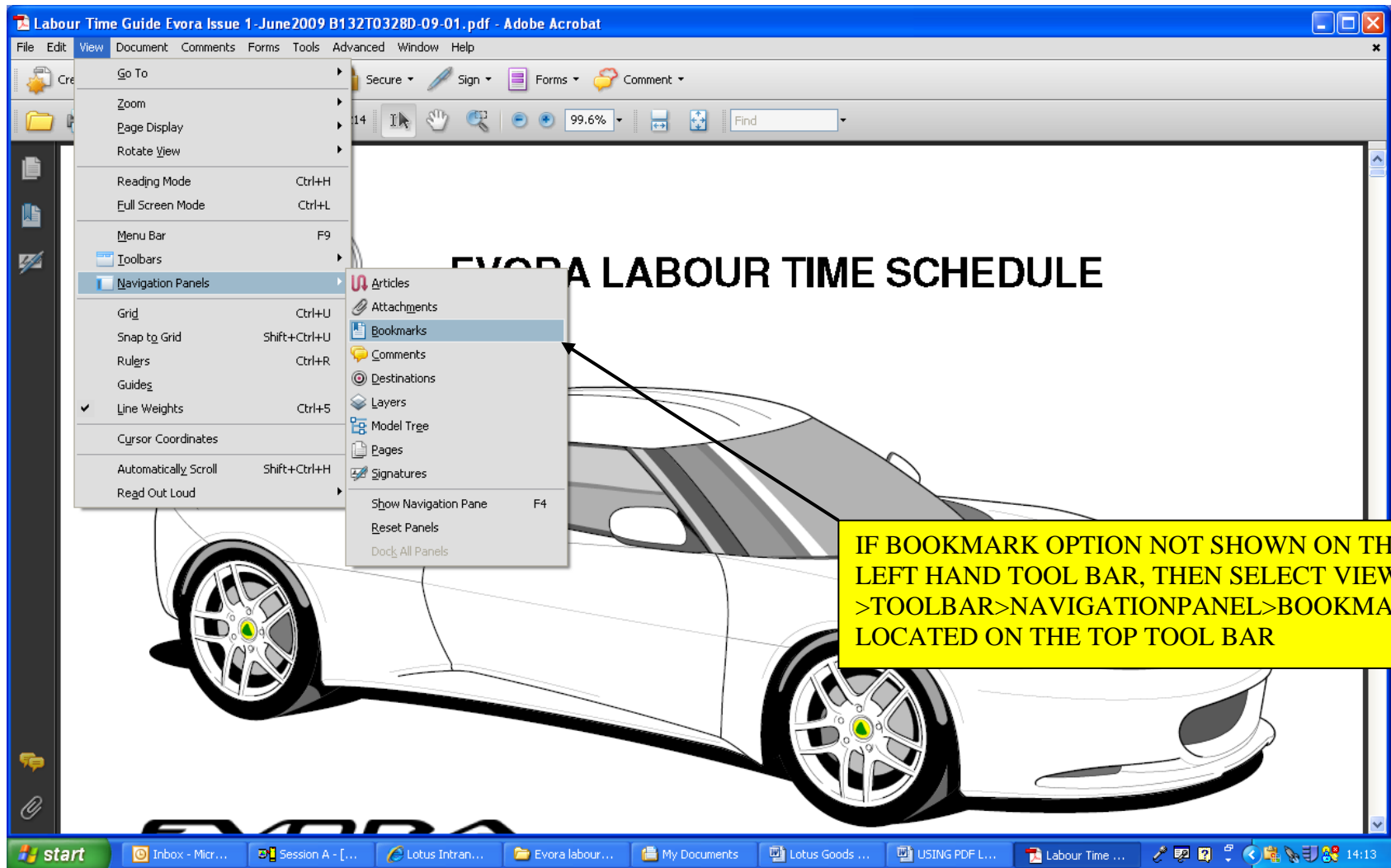
1 / 214 99.6% Find

Bookmarks: Go to specific points of interest using bookmark links

EVORA LABOUR TIME SCHEDULE

OPEN THE FILE AND SELECT THE BOOKMARK OPTION ON THE LEFT HAND TOOL BAR

start | Inbox - Micr... | Session A - [... | Lotus Intran... | Evora labour ... | My Documents | Lotus Goods ... | USING PDF L... | Labour Time ... | 14:09



IF BOOKMARK OPTION NOT SHOWN ON THE LEFT HAND TOOL BAR, THEN SELECT VIEW >TOOLBAR>NAVIGATIONPANEL>BOOKMARKS LOCATED ON THE TOP TOOL BAR

Labour Time Guide Evora Issue 1 -June2009 B132T0328D-09-01.pdf - Adobe Acrobat

File Edit View Document Comments Forms Tools Advanced Window Help


Create Combine Collaborate Secure Sign Form

1 / 214

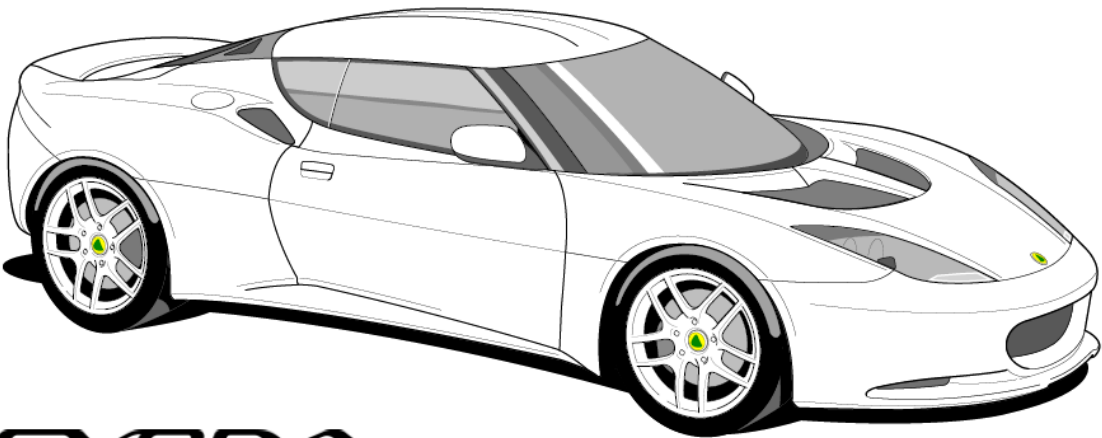
BOOKMARKS ARE DISPLAYED AND SHOW THE SCHEDULE BY FUNCTION GROUP IN THE SAME ORDER AS THE ORIGINAL PAPER 'HARD COPY' LIST

Bookmarks

- Evora Labour Time Schedule Front Page
- Introduction
- 10.00 Body
- 11.00: Glazing & Seals
- 12.00 Exterior Fittings
- 13.00: Seats & Seat Belts
- 14.00: Pedal Box & Fascia
- 15.00: Interior Trim
- 17.00: Electrical
- 18.00: HVAC
- 19.00: Labels
- 30.00: Chassis
- 31.00: Suspension
- 32.00: Steering
- 33.00: Brakes
- 34.00: Wheels & Tyres
- 40.00 Engine
- 41.00: Belts & Pulleys
- 42.00: Induction Systems
- 44.00: Fuel System
- 45.00: Exhaust
- 46.00: Cooling



EVORA LABOUR TIME SCHEDULE



EVORA

start | Inbox - Micr... | Session A - [... | Lotus Intran... | Evora labour... | My Documents | Lotus Goods ... | USING PDF L... | Labour Time ... | 14:18

Labour Time Guide Evora Issue 1-June2009 B132T0328D-09-01 .pdf - Adobe Acrobat

File Edit View Document Comments Forms Tools Advanced Window Help

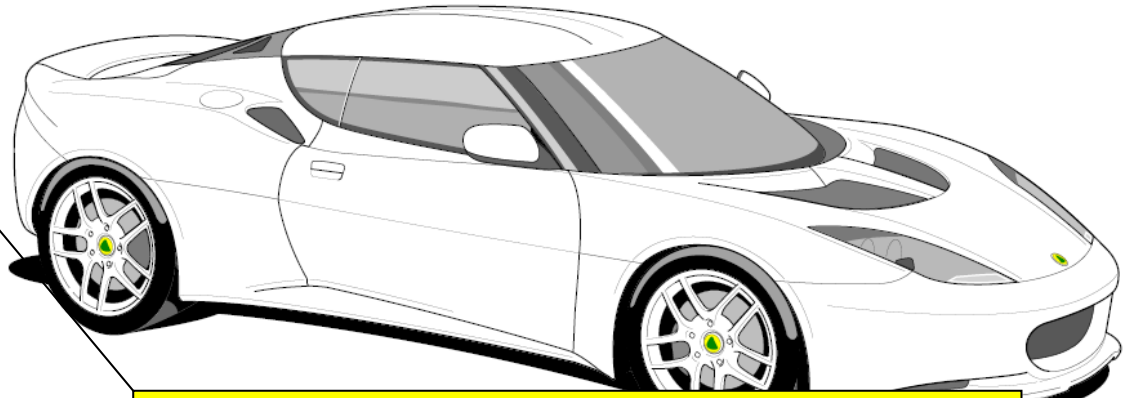
Create Combine Collaborate Secure Sign Forms Comment

1 / 214 82.6% Find

Bookmarks

- Evora Labour Time Schedule Front Page
- Introduction
- 10.00 Body
- 11.00: Glazing & Seals
- 12.00 Exterior Fittings
- 13.00: Seats & Seat Belts
- 14.00: Pedal Box & Fascia
- 15.00: Interior Trim
- 17.00: Electrical
- 18.00: HVAC
- 19.00: Labels
- 30.00: Chassis
- 31.00: Suspension
- 32.00: Steering
- 33.00: Brakes
- 34.00: Wheels & Tyres
- 40.00 Engine
- 41.00: Belts & Pulleys
- 42.00: Induction Systems
- 44.00: Fuel System
- 45.00: Exhaust
- 46.00: Cooling

EVORA LABOUR TIME SCHEDULE



YOU CAN SCROLL DOWN THE MAIN PDF DOCUMENT OR SELECT A SPECIFIC MAIN FUNCTION GROUP AS REQUIRED. IF A FUNCTION GROUP DISPLAYS A '+' SYMBOL THEN OTHER MEDIUM GROUPS ARE INCLUDED WITHIN THAT MAIN GROUP

start | Session A - [...] | Lotus Intran... | Evora labour... | My Documents | Lotus Goods ... | USING PDF-L... | Labour Time ... | 14:21

Labour Time Guide Evora Issue 1-June2009 B132T0328D-09-01.pdf - Adobe Acrobat

File Edit View Document Comments Forms Tools Advanced Window Help

Create Combine Collaborate Secure Sign Forms Comment

8 / 214 77.7% Find

Bookmarks

- 10.00 Body
 - 10.01 Body: Front & Rear Clamshells
 - 10.02 Bodysides, Windscreen Frame & Rear Bulkhead
 - 10.04: Crash Structures
 - 10.09: Front Access Hatch & Release Mechanism
 - 10.11: Tailgate & Release Mechanism
 - 10.13: Engine Compartment, Cover, Latch Mechanism
 - 10.15: Door Shells, Beams, Hinges
 - 10.17: Door Latch Mechanism
 - 10.23: Bumpers, Valences Spoilers & Aerofoils
 - 10.25: Undertray & Diffuser
 - 10.31: Towing Strut/Hook
 - 11.00: Glazing & Seals
 - 12.00 Exterior Fittings

10.01.01 10.01.13 10.01.14 10.01.02

EVORA
10.01

SELECTING THE '+' SYMBOL WILL DISPLAY THE MEDIUM GROUPS CONTAINED WITHIN THE MAIN FUNCTION GROUP.

start | Inboxes - Micr... | Session A - [... | Lotus Intran... | Evora labour... | My Documents | Lotus Goods... | USING PDF L... | Labour Time... | 14:29

Labour Time Guide Evora Issue 1-June2009 B132T0328D-09-01.pdf - Adobe Acrobat

File Edit View Document Comments Forms Tools Advanced Window Help

Create Combine Collaborate Secure Sign Forms

14 / 214

CLICK ON THE RELEVANT BOOKMARK TO DISPLAY THAT FUNCTION GROUP PICTURE IN THE MAIN DOCUMENT

Bookmarks

- Evora Labour Time Schedule Front Page
- Introduction
- 10.00 Body
 - 10.01 Body: Front & Rear Clamshells
 - 10.02 Bodysides, Windscreen Frame & Rear Bulkhead
 - 10.04: Crash Structures
 - 10.09: Front Access Hatch & Release Mechanism**
 - 10.11: Tailgate & Release Mechanism
 - 10.13: Engine Compartment, Cover, Latch Mechanism
 - 10.15: Door Shells, Beams, Hinges
 - 10.17: Door Latch Mechanism
 - 10.23: Bumpers, Valences Spoilers & Aerofoils
 - 10.25: Undertray & Diffuser
 - 10.31: Towing

EVORA
10.09

10.09.01

10.09.07

10.09.03

10.09.04

10.09.06

10.09.12

10.09.13

Labour Time Guide Evora Issue 1-June2009 B132T0328D-09-01.pdf - Adobe Acrobat


File Edit View Document Comments Forms Tools Advanced Window Help

Create Combine Collaborate Secure Sign Forms Comment

15 / 214 69.5% Find

Bookmarks

- Evora Labour Time Schedule Front Page
- Introduction
- 10.00 Body
 - 10.01 Body: Front & Rear Clamshells
 - 10.02 Bodsides, Windscreen Frame & Rear Bulkhead
 - 10.04: Crash Structures
 - 10.09: Front Access Hatch & Release Mechanism**
 - 10.11: Tailgate & Release Mechanism
 - 10.13: Engine Compartment, Cover, Latch Mechanism
 - 10.15: Door Shells, Beams, Hinges
 - 10.17: Door Latch Mechanism
 - 10.23: Bumpers, Valences Spoilers & Aerofoils
 - 10.25: Undertray & Diffuser
 - 10.31: Towing

 **LOTUS EVORA STANDARD LABOUR TIMES.**

Function Area: 10.00 Body
Function Code: 10.09 Front Access Hatch & Release Mechanism

Operation Code	Description	Op Type	Hours	Derivative
10.09.01-00	Access hatch, front	Adjust	0.1	
10.09.01-02	Access hatch, front (excl. paint)	Renew	0.2	
10.09.03-01	Striker pin	r&r	0.1	
10.09.03-02	Striker pin	Renew	0.1	
10.09.04-00	Latch assembly	Adjust	0.1	
10.09.04-02	Latch assembly	Renew	0.2	
10.09.06-01	Cable assembly, hatch release (includes heater box R & F)	r&r	6.2	
10.09.06-02	Cable assembly, hatch release (includes heater box R & F)	Renew	6.2	
10.09.07-01	Hinge assembly, front hatch	r&r	0.2	
10.09.07-02	Hinge assembly, front hatch	Renew	0.2	
10.09.12-01	Lever, hatch release	r&r	0.2	
10.09.12-02	Lever, hatch release	Renew	0.2	
10.09.13-00	Bump stop (one or all)	Adjust	0.1	
10.09.13-02	Bump stop (one or all)	Renew	0.1	

SCROLLING DOWN TO THE NEXT PAGE ON THE MAIN DOCUMENT WILL DISPLAY THE OPERATION CODES, DESCRIPTIONS AND TIMES FOR THAT FUNCTION GROUP PICTURE

Function Code: 10.09, Page: 1

start | Inbox - Microsoft Ou... | Session A - [24 x 80] | Lotus Intranet - Pho... | 2 Windows Explorer | 3 Microsoft Office ... | Labour Time Guide E... | 14:51

SEARCHING FOR OPERATION CODES BY NUMBER OR DESCRIPTION

Labour Time Guide Evora Issue 1-June2009 B132T0328D-09-01 .pdf - Adobe Acrobat

File Edit View Document Comments Forms Tools Advanced Window Help

Undo Bookmark Text Ctrl+Z
Redo Shift+Ctrl+Z
Cut Ctrl+X
Copy Ctrl+C
Paste Ctrl+V
Delete
Copy File to Clipboard
Select All Ctrl+A
Deselect All Shift+Ctrl+A
Check Spelling
Look Up Selected Word...
Find Ctrl+F
Search Shift+Ctrl+F
Search Results
Preferences... Ctrl+K

15 / 214 69.5% Find

LOTUS EVORA STANDARD LABOUR TIMES.

Function Area: 10.00 Body
Function Code: 10.09 Front Access Hatch & Release Mechanism

Operation Code	Description	Op. Type	Hours	Derivative
10.09.01-00	Access hatch, front	Adjust	0.1	
10.09.01-02	Access hatch, front (excl. paint)	Renew	0.2	
10.09.03-01	Striker pin	r&r	0.1	
10.09.03-02	Striker pin	Renew	0.1	
10.09.04-00	Latch assembly	Adjust	0.1	
10.09.04-02	Latch assembly	Renew	0.2	
10.09.06-01	Cable assembly, hatch release (includes heater box R & F)	r&r	6.2	
10.09.06-02	Cable assembly, hatch release (includes heater box R & F)	Renew	6.2	
10.09.07-01	Hinge assembly, front hatch	r&r	0.2	
10.09.07-02	Hinge assembly, front hatch	Renew	0.2	
10.09.12-01	Lever, hatch release	r&r	0.2	
10.09.12-02	Lever, hatch release	Renew	0.2	
10.09.13-00	Bump stop (one or all)	Adjust	0.1	
10.09.13-02	Bump stop (one or all)	Renew	0.1	

IT IS ALSO POSSIBLE TO SEARCH BY OPERATION CODE OR DESCRIPTION WITHIN THE DOCUMENT. SELECT THE EDIT OPTION ON THE TOP TOOL BAR AND THEN SELECT SEARCH

Function Code: 10.09, Page: 1

start Contacts - Microsoft ... Session A - [24 x 80] Lotus Intranet - Pho... Windows Explorer Microsoft Office ... Labour Time Guide E... 15:01

Search

Arrange Windows

Where would you like to search?

In the current document

All PDF Documents in

My Documents

What word or phrase would you like to search for?

COMPRESSOR

Whole words only

Case-Sensitive

Include Bookmarks

Include Comments

Search

[Use Advanced Search Options](#)


[Find a word in the current document](#)

-June2009 B132T0328D-09-01.pdf - Adobe Acrobat

Forms Tools Advanced Window Help

Collaborate Secure Sign Forms Comment

15 / 214 69.5% Find



LOTUS EVORA STANDARD LABOUR TIMES.

Function Area: 10.00 Body

Function Code: 10.09 Front Access Hatch & Release Mechanism

Operation Code	Description	Op Type	Hours	Derivative
10.09.01-00	Access hatch, front	Adjust	0.1	
10.09.01-02	Access hatch, front (excl. paint)	Renew	0.2	
10.09.03-01	Striker pin	r&r	0.1	
10.09.03-02	Striker pin	Renew	0.1	
10.09.04-00	Latch assembly	Adjust	0.1	
10.09.04-02	Latch assembly	Renew	0.2	
10.09.06-01	Cable assembly, hatch release (includes heater box R & F)	r&r	6.2	
10.09.06-02	Cable assembly, hatch release (includes heater box R & F)	Renew	6.2	
10.09.07-01	Hinge assembly, front hatch	r&r	0.2	
10.09.07-02	Hinge assembly, front hatch	Renew	0.2	
10.09.12-01	Lever, hatch release	r&r	0.2	
10.09.12-02	Lever, hatch release	Renew	0.2	
10.09.13-00	Bump stop (one or all)	Adjust	0.1	
10.09.13-02	Bump stop (one or all)	Renew	0.1	

ENTER OPERATION CODE OR DESCRIPTION AND SELECT SEARCH OPTION

start Contacts - Micro... Session A - [24 ... Lotus Intranet - ... 2 Windows Ex... 3 Microsoft Of... Labour Time Gui... Search 15:05

Search

Looking For:
COMPRESSOR in the current document

Results:
1 documents with 9 instances

New Search

Results:

- Eagle inside cover.pmd
 - AC Compressor Pow
 - assembly, compress
 - assembly, compress
 - assembly, compress
 - ring, compressor Re
 - AC Compressor 40.2
 - Compressor r&r 40.2
 - Compressor Renew

Collapse file paths

[Use Basic Search Options](#)


[Find a word in the current document](#)

-June2009 B132T0328D-09-01.pdf - Adobe Acrobat

Forms Tools Advanced Window Help

Collaborate Secure Sign Forms Comment

15 / 214 69.5% Find

 **LOTUS EVORA STANDARD LABOUR TIMES.**

Function Area: 10.00 Body
Function Code: 10.09 Front Access Hatch & Release Mechanism

Operation Code	Description	Op Type	Hours	Derivative
10.09.01-00	Access hatch, front	Adjust	0.1	
10.09.01-02	Access hatch, front (excl. paint)	Renew	0.2	
10.09.03-01	Striker pin	r&r	0.1	
10.09.03-02	Striker pin	Renew	0.1	
10.09.04-00	Latch assembly	Adjust	0.1	
10.09.04-02	Latch assembly	Renew	0.2	
10.09.06-01	Cable assembly, hatch release (includes heater box R & F)	r&r	6.2	
10.09.06-02	Cable assembly, hatch release (includes heater box R & F)	Renew	6.2	
10.09.07-01	Hinge assembly, front hatch	r&r	0.2	
10.09.07-02	Hinge assembly, front hatch	Renew	0.2	
10.09.12-01	Lever, hatch release	r&r	0.2	
10.09.12-02	Lever, hatch release	Renew	0.2	
10.09.13-00	Bump stop (one or all)	Adjust	0.1	
10.09.13-02	Bump stop (one or all)	Renew	0.1	

ANYWHERE THAT DESCRIPTION IS DISPLAYED IN THE LIST WILL BE DISPLAYED, SELECT AS REQUIRED TO TAKE YOU DIRECTLY TO THAT TEXT PAGE IN THE MAIN DOCUMENT

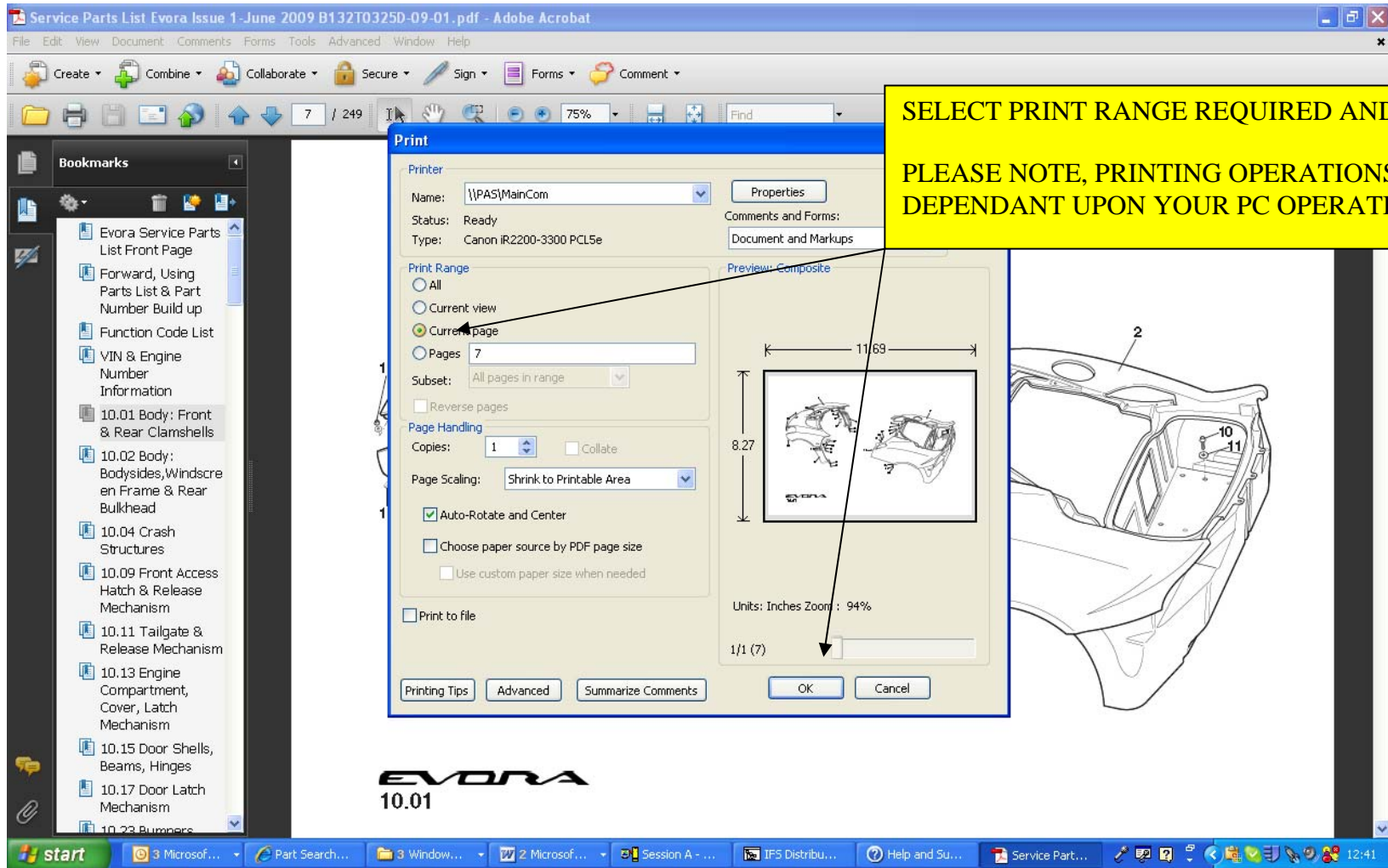
start | Contacts - Micro... | Session A - [24 ... | Lotus Intranet - ... | 2 Windows Ex... | 3 Microsoft Of... | Labour Time Gui... | Search | 15:06

PRINTING PAGES FROM TIME SCHEDULE

THE TIME SCHEDULE CAN BE PRINTED IN ITS ENTIRETY OR YOU CAN PRINT SPECIFIC PAGES AS NECESSARY

SELECT THE PAGE TO BE PRINTED SO IT IS DISPLAYED, THEN SELECT THE FILE OPTION ON THE TOP LEFT HAND TOOL BAR AND THEN SELECT PRINT

EVORA
10.01



SELECT PRINT RANGE REQUIRED AND SELECT 'OK',
PLEASE NOTE, PRINTING OPERATIONS MAY VARY
DEPENDANT UPON YOUR PC OPERATING SYSTEM.

Print

Printer Name: \\PAS1MainCom
Status: Ready
Type: Canon IR2200-3300 PCL5e

Print Range:
 All
 Current view
 Current page
 Pages 7

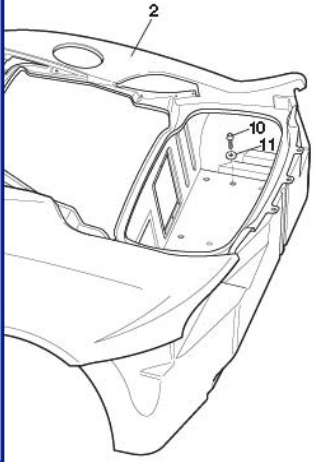
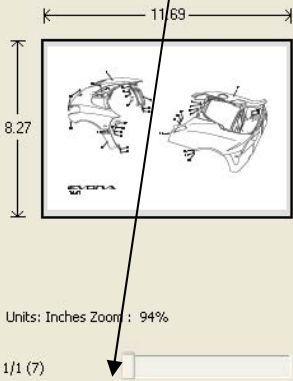
Subset: All pages in range

Page Handling:
Copies: 1 Collate
Page Scaling: Shrink to Printable Area

Auto-Rotate and Center
 Choose paper source by PDF page size
 Use custom paper size when needed

Print to file

Buttons: Printing Tips, Advanced, Summarize Comments, OK, Cancel



EVORA
10.01